



Suzuki GSX1300R  
 Fender Eliminator Kit  
 P/N: 680-5220  
 MADE IN THE USA!

Kit Contents

Part Number	Description	Quantity	Part Number	Description	Quantity
99-FE-680-5220	Fender Brackets	2	99-Wash6x12	6x12mm Washer	2
99-Wash6x15	6x15mm Washer	6	99-HB-6x12	6x12 Bolt	4
99-LN-6	6mm Locknut	2	99-HB-6x16	6x16 Bolt	2

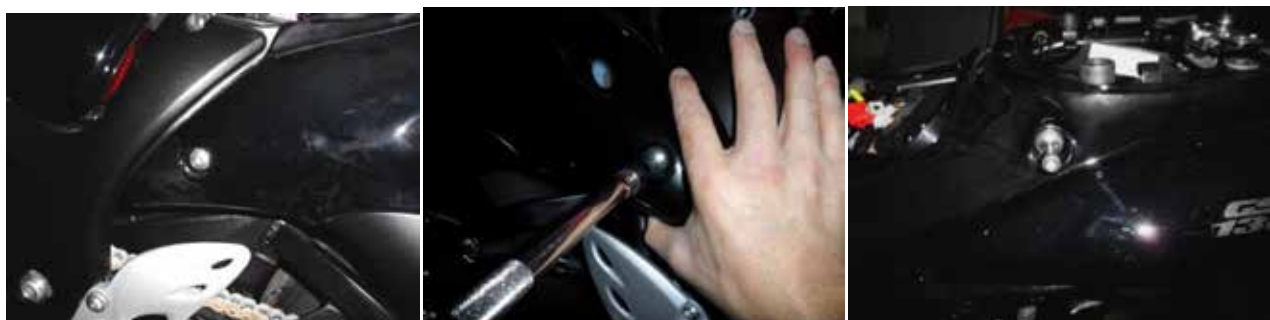
Note: To complete your installation we recommend using DMP Marker Lights and DMP OEM Type Wire Harness, which are available from your local DMP dealer or [www.moto911.com](http://www.moto911.com). Make sure bike is turned off during installation. It is highly recommended that the DMP fender Eliminator and marker lights are installed by a certified technician. DMP is not responsible for any part of your motorcycle for any reason. If in any doubt please call us during installation.

1. Remove the rear set.
2. Unplug the OEM plate light connection found on the left hand side in the tail section.



There is a zip tie that holds the wires to the frame on the left hand side. You will need to loosen the undertail in order to cut the zip tie to remove the fender. Follow these steps in order to complete the fender eliminator process.

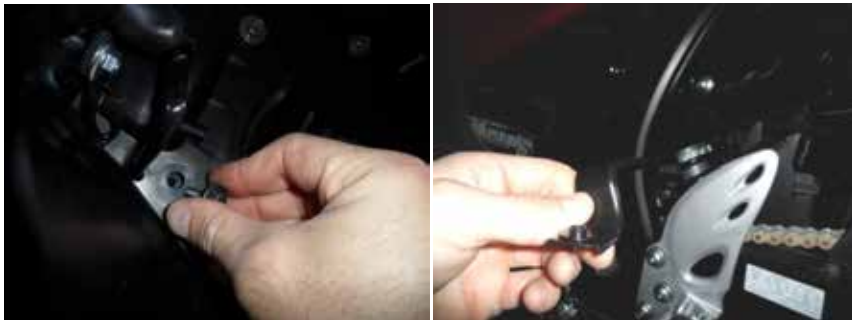
3. Remove the side fairing bolts on the left hand side.



4. Remove the plastic undertail fender rivets on the left hand side.



5. Remove the front undertail bracket located just in front of the rear tire. The bracket has two bolts that hold the front of the undertail in place.



6. Remove the four bolts holding the stock fender in place. (the fender will not be able to be removed until the zip tie has been accessed and cut)



7. Separate the tail section and undertail on the left hand side. This will allow you to cut the zip tie holding the plate light wires in place. You will be able to remove the stock fender allowing you to splice or solder the new plate lights to the stock connector (plate light sold separately (Part number 900-2042)).



8. Install the plate lights to the DMP Fender Eliminator. Feed the wires through the same location. Plug the OEM connector into place. The DMP fender eliminator will hang freely for a short moment. Slightly pull open the left side body panel and push the undertail into its original place. Using two of the 6x1.00x12 bolts and 6x15 washer (larger 6mm washer) bolt the undertail back into place. Using two of the 6x1.00x16 bolts and 6x15 washers bolt the DMP Fender Eliminator into place.



9. Re install the undertail bracket. Install the left bolt first (left bolt is more open and easier to access). Use a flash light for assistance.





10. Re install the left side undertail body rivets.



11. Install the left side body panel bolts. Use a flash light to help line up the holes.



12. Remaining hardware is used to mount your license plate.

